

THE WEBLEY RAIDER

OWNER'S MANUAL
READ THIS MANUAL BEFORE
USING YOUR NEW AIRGUN



**THE FAMOUS NAME
IN AIRGUNS**
WEBLEY AND SCOTT LIMITED

Frankley Industrial Park, Tay Road, Rubery,
Rednal, Birmingham, B45 0PA, England
TELEPHONE: 0121-453 1564, FAX: 0121-457 7846

Guarantee

The Webley Raider is fully guaranteed against faulty workmanship and defective materials for a period of 1 year from the original date of purchase provided it has not been misused or tampered with in any way. Should it become necessary, consult the dealer from whom it was purchased. This guarantee does not affect your statutory rights.

THE LAW

KNOW THE LAW ON AIRGUNS AND OBEY IT.

**ACT RESPONSIBLY, ACT SAFELY, THEN
ENJOY YOUR SHOOTING!**

! WARNING !

**THE WEBLEY RAIDER CONTAINS
PRESSURISED AIR. DO NOT ATTEMPT TO
DISMANTLE THE RAIDER WHILST THE RIFLE IS
PARTIALLY OR FULLY CHARGED.
SERIOUS INJURY AND/OR DAMAGE MAY
RESULT IF THIS INSTRUCTION IS IGNORED.**

*OUR POLICY IS ONE OF CONTINUAL IMPROVEMENT. WE RESERVE
THE RIGHT TO MODIFY THE SPECIFICATION OF THIS PRODUCT
WITHOUT PRIOR NOTICE.*

USE, CARE AND MAINTENANCE OF THE WEBLEY RAIDER AIR RIFLE.

SPECIFICATION.

The Webley Raider is a precharged air rifle incorporating a fast action 2-shot magazine. It is available in either .177 (4.5mm) or .22 (5.5mm) calibres, and is designed for use with waisted lead pellets.

The rifle incorporates many special design features which includes:

1. A bolt action cocking and loading system.
2. A fast action 2 - shot magazine. The Raider may also be used as a single shot rifle if desired
3. An adjustable 2 stage trigger mechanism.
4. A precision rifled barrel to ensure pin-point accuracy.
5. A dovetail which is incorporated in the barrel housing to fit an optional telescope sight.
6. An ambidextrous custom style stock incorporating double cheekpieces and single ventilated rubber recoil pad. The stock is available in beech or walnut. The walnut stock also incorporates highly defined cheekpieces and chequered pistol grip.
7. A quick-fill system is fitted as standard.
8. Optional screw-in silencers are available where permitted.

WEIGHT (no sight fitted): **7.2 lbs** **(3.3kgs)**

BARREL LENGTH: **17.5 inches** **(44.5 cm)**

OVERALL LENGTH: **37 inches** **(94 cm)**

The Webley Raider is designed specifically for use with dry compressed air.

NO OTHER GAS OR GAS COMBINATION MUST BE USED

The rifle may be filled from a divers bottle, a suitable compressor or by using "The Webley Pump" - a hand pump specifically made to fill precharged airguns

Details of how to use the pump are included at the rear of this manual.

MAXIMUM SAFE WORKING PRESSURE (SWP) : 200 BAR.

RECOMMENDED FILL PRESSURE : 190 BAR.

Approx. number of shots available at full power -12 ft.lbs models*:-

60 -shots .177 (4.5mm) CAL. and 75-shots .22 (5.5mm) CAL.

*** NOTE**

Further shots at lower velocities will discharge after the quoted number of rounds have been fired. It is recommended, however, to refill the rifle at this point as the trajectories and kinetic energies of any further pellets fired will differ significantly from those achieved at full power.

GENERAL INSTRUCTIONS.

Before using your new rifle.

1. Check it is fully charged.
2. Fit your optional scope and mounts
3. Appreciate the basic safety rules.

THE BASIC SAFETY RULES ARE:

1. Treat every rifle as if it is loaded.
2. Never point the rifle at anyone, or allow anyone to point a rifle at you, even if you know it is not loaded.
3. Always carry the rifle so that the direction of the muzzle is under control, even if you stumble.
4. Always be sure of your target and what lies behind it before firing your rifle.
5. Never leave a loaded rifle unattended.
6. Beware of targets that tend to cause ricochets.

OPERATING INSTRUCTIONS.

CHARGING THE RIFLE.

Fit the filler nozzle to the air line of the charging equipment, which must incorporate a pressure gauge. Ensure both filler nozzle and rifle filler hole is clear from dirt, then push the nozzle into the filler hole. Fully charge the rifle to the cylinder pressure quoted previously in this manual. When using a divers bottle, refill the rifle slowly to prevent the heat created by the filling operation damaging the rifles components.

Undo the hose air drain screw before pulling the filler nozzle out of the rifle.

LOADING THE RIFLE AND USING THE MAGAZINE.

The design of the magazine allows the user to select their personal preference how it is loaded and used

To use the fast action capability of the magazine to its greatest advantage, it is recommended the following procedure is adopted.

1. Open the bolt and push the magazine fully to the right against its spring pressure. Close the bolt and load a pellet, nose first, into the exposed right-hand magazine chamber. Use the channel in the barrel housing to guide the pellet into the chamber and ensure the pellet skirt does not protrude from the magazine. The magazine O ring will retain the pellet in the chamber. **NOTE THAT THIS OPERATION HAS ALSO COCKED THE TRIGGER MECHANISM / HAMMER ASSEMBLY AND IF THE TRIGGER IS PULLED AT THIS STAGE THE RIFLE WILL DISCHARGE. EVEN THOUGH THERE IS NO PELLET IN THE BARREL.**

2. Open the bolt - the right hand magazine chamber is sprung into line with the barrel chamber. Leave the bolt in the open (safe) slot position.

3. Now load a pellet, nose first, into the exposed left hand magazine chamber as described above.

DO NOT CLOSE THE BOLT UNTIL YOU ARE READY TO USE THE RIFLE.

4. When ready to use the rifle, push the magazine to the right and fully close the bolt - the left hand pellet has now been pushed into the barrel and the rifle is ready to fire.

5. Once the first pellet has been shot, open the bolt - the magazine will automatically position the second (right-hand) pellet in line with the barrel bore.

CLOSE THE BOLT ONLY IF YOU REQUIRE AN IMMEDIATE SECOND SHOT.

6. If you do not require a fast second shot, leave the bolt fully open and reload the empty magazine chamber. The firing process is now ready to be repeated.

NOTE

ALWAYS ENSURE THE BOLT IS FULLY CLOSED BEFORE FIRING THE RIFLE. THE PERFORMANCE OF THE RIFLE WILL BE REDUCED IF THE BOLT IS NOT FULLY CLOSED.

SAFETY.

1. Do not close the bolt of a loaded rifle until you are ready to take a shot.

2. To make a loaded rifle safe, pull the bolt rearwards and leave it positioned in the rear of the body tube slot - this disconnects the trigger mechanism from the hammer assembly and the rifle will not fire.

Note that if a pellet has been loaded from the magazine into the barrel and the bolt is opened without firing the rifle, always close the bolt with an empty magazine chamber in line with the barrel bore. This will prevent accidentally loading a second pellet into the barrel.

3. To decock a loaded rifle, take note of what magazine chamber is in line with the barrel, then pull the bolt to the rear of the body tube slot until you feel it contact the hammer assembly. Hold the bolt in this position and pull the trigger - this disconnects the trigger assembly from the hammer assembly. Close the bolt slowly while resisting the hammer spring load until the hammer

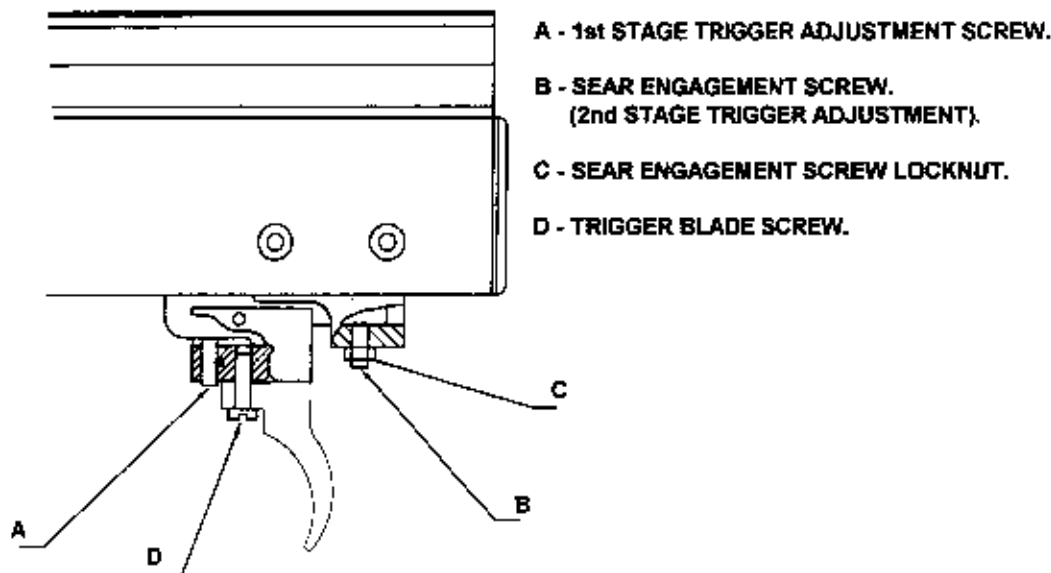
contacts the air valve. This operation will prevent the rifle from firing but will not remove a pellet from the barrel. When the rifle is recoiled, ensure the same magazine chamber is repositioned to the barrel to ensure a second pellet is not pushed into the barrel bore.

4. Once your shooting session is completed, do not store the rifle until you are sure it is not loaded with pellets. It is recommended to fire the rifle twice at a safe target to eliminate such a possibility.

TRIGGER MECHANISM ADJUSTMENT.

The Webley Raider is fitted with a 2 stage trigger mechanism and is factory set. The mechanism is adjustable if you wish to alter the factory settings.

To adjust the trigger mechanism, the action must first be removed from the stock. The diagram below shows the location of the trigger adjusting screws.



3271

3272

3273

3274

3254

3275

3276

3277

3278

3279

3280

3281

3282

3283

3284

3285

3286

3287

3288

3289

3290

3291

3292

3293

3294

3295

3296

3297

3298

3299

3300

3301

3302

3303

3304

3305

3306

3307

3308

3309

3310

3311

3312

3313

3314

3315

3316

3317

3318

3319

3320

3321

3322

3323

3324

3325

WEBLEY RAIDER

WEBLEY & SCOTT LTD. BIRMINGHAM ENGLAND

3306

3271

3273

3274

3275

3276

3277

3278

3279

3280

3281

3282

3283

3284

3285

3286

3287

3288

3289

3290

3291

3292

3293

3294

3295

3296

3297

3298

3299

3300

3301

3302

3303

3304

3305

3306

3307

3308

3309

3310

3311

3312

3313

3314

3315

3316

3317

3318

3319

3320

3321

3204-177

3285-22

3287

3288

3289

3290

3291

3292

3293

3294

3295

3296

3297

3298

3299

3300

3301

3302

3303

3304

3305

3306

3307

3308

3309

3310

3311

3312

3313

3314

3315

3316

3317

3318

3319

3320

3321

3322

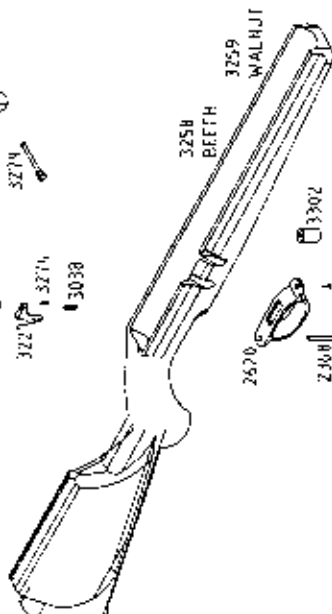
3323

3324

3325

3305

3292



PARTS LIST FOR WEBLEY RAIDER

PT No	QNTY	PART NAME
2100	1	PIN - TRIGGER FULCRUM
7224	2	O-RING - BARREL
2368	2	STOCK SCREW
2414	1	WOODSCREW - FIGUARO
2574	1	SPRING - TRIGGER BASE
2620	1	TRIGGER GUARD
2663	3	BALL - BOLT SLIDE
2921	1	WASHER - ADJ.SCREW
3038	1	SCREW - TRIGGER BLADE
3039	1	NUT - SEAR ADJ. SCREW
3087	1	SCREW TENSIONER
3224	1	BARREL HOUSING
3225	1	BARREL SUPPORT
3226	1	BASE - TRIGGER
3227	1	BLADE - TRIGGER
3228	1	CAGE - TRIGGER MECH
3230	1	MAGAZINE
3231	1	END CAP - MAGAZINE
3232	1	MAGAZINE PLATE
3233	1	MAIN VALVE HOUSING
3234	1	END PLUG - REAR
3235	6	SCREW - VIBOX & E/PLUG
3236	1	END PLUG - FRONT
3237	1	CYLINDER TUBE
3238	1	SEAR

PT No	QNTY	PART NAME
3239	1	VALVE STEM
3251	1	PELLET PROD
3252	1	BOLT HANDLE
3253	1	SPACER - BOLT
3254	2	SCREW - MAG PLATE
3255	1	HAMMER
3258	1	SLIDE - BOLT
3258	1	STOCK ASSEMBLY BEECH
3259	1	STOCK ASSEMBLY WINUT
3265	1	VALVE SEAL
3266	2	VALVE SPRING BACKPLATE
3269	1	CYLINDER END CAP
3270	1	SCREW - CYLINDER END CAP
3271	1	SCREW - MAG END CAP
3272	2	SCREW - PROD & BHSNG
3273	3	SCREW - PROD & GIBUSH
3274	2	ADJ. SCREW, TRIG & SEAR
3275	1	STOP PIN - MAG SPRING
3276	2	PIN - TRIGGER MECH CAGE
3277	3	PIN - SEAR FLDRM & STOP
3278	1	SCREW - BHSNG FRONT
3278	1	SCREW - BOLT
3280	2	BACKPLATE RET. CIRCLIP
3281	1	SPACER - PROD SCREW
3282	1	AIR TRANSFER PORT

PT No	QNTY	PART NAME
3283	1	GUIDE BUSH, PELLET PROD
3284	1	BARREL .177CAL
3285	1	BARREL .22 CAL
3286	1	VALVE 'O' SEAL
3287	1	'O' SEAL STEADY
3288	1	O' SEAL - PELLET PROD
3289	1	O' SEAL - MAGAZINE
3290	2	TRANSFER PORT O SEAL
3291	2	CYLINDER O SEAL
3292	1	FILLER PROBE
3294	1	FILLER VALVE SEAL
3295	1	MUZZLE CAP
3296	1	HAMMER SPRING
3297	1	VALVE SPRING
3298	1	FILLER VALVE SPRING
3299	1	SEAR SPRING
3300	1	SPRING - MAG RETURN
3301	1	SPRING - PELLET PROD
3302	1	INSERT - STOCK SCREW
3303	1	ADJ SCREW H/SPRING
3304	1	VALVE SEAL ASSEMBLY
3305	2	FILLER PROBE SEAL
3306	1	RAIDER LABEL

NOTE.

1. ALWAYS ENSURE THE MAGAZINE AND THE BARREL ARE NOT LOADED WITH A PELLET BEFORE PROCEEDING WITH ANY ADJUSTMENTS TO THE TRIGGER MECHANISM
2. IF THE SEAR ENGAGEMENT SCREW IS ADJUSTED, ENSURE A SUFFICIENT AMOUNT OF SEAR ENGAGEMENT WITH THE HAMMER IS MAINTAINED TO ENSURE THE TRIGGER PULL HAS NOT BEEN SET DANGEROUSLY SENSITIVE. TEST FIRE THE RIFLE PRIOR TO RELOADING THE MAGAZINE.

ADJUSTING THE POWER.

The mechanism of this rifle has been factory set to ensure its power falls within the current U.K. 12 ft. lbs. maximum kinetic limit allowed without possessing a firearms certificate. The hammer adjustment screw is bonded to the hammer and any adjustments made will break the bond. Unless rebonded the hammer spring compression may vary which will cause inconsistent power.

If the bond is broken, consult Webley & Scott.

MAINTENANCE.

WARNING!

NEVER ATTEMPT TO STRIP THIS RIFLE WHILST IT IS PARTIALLY OR FULLY CHARGED. SERIOUS INJURY AND/OR DAMAGE MAY RESULT IF THIS INSTRUCTION IS IGNORED.

IF THE RIFLE DEVELOPS A FAULT.

Should the rifle develop a fault within the guarantee period, consult the dealer from whom it was purchased. The guarantee does not cover parts inadvertently damaged, nor rifles incorrectly assembled by the owner.

This rifle should only be dismantled by Webley personnel or by a competent gunsmith.

LUBRICATION.

DO NOT APPLY LUBRICATION TO THE AIR FILLER NOZZLE OR THE RIFLES' AIR FILLER HOLE.

Use only mineral based oils such as "Waboil" to lubricate the Raider. Occasionally apply oil sparingly to the following parts:-

1. The trigger mechanism - remove the stock for access.
2. With the stock removed, apply oil to the rear of the hammer and hammer spring assembly through the trigger mechanism slot in the body tube.
3. Close the bolt and apply oil through the cylinder bolt slot onto the bolt carrier. Open and close the bolt several times.
4. With the bolt open apply oil to the front of the hammer assembly.
5. Apply oil to the magazine where it contacts the barrel housing assembly. Also apply oil in both magazine chambers, then cycle the magazine and bolt several times. This operation will lubricate the magazine chambers, the pellet prod and its 'O' ring.

DO NOT OVER - LUBRICATE THE RIFLE.

QUICK FILL NOZZLE 'O' RINGS REPLACEMENT.

After a period of time it will be necessary to replace the 'O' rings on the Quick-fill nozzle. This will be apparent if compressed air is heard to leak from the nozzle during the filling process. Always replace both 'O' rings.

MAGAZINE 'O' RING AND PELLET PROD 'O' RING REPLACEMENT.

It is not necessary to empty the air charge from the rifle to undertake the following procedure.

If the bolt operation becomes stiff and lubricating the magazine assembly does not overcome the stiffness, the magazine 'O' ring, Part No 3289 may be worn where it is contacted by the pellets. Try to reposition the 'O' ring so the pellets contact it in different sections.

To remove the 'O' ring, remove the 2 - magazine plate screws, Part No 3254 from the barrel housing. Part No 3224 and remove the magazine plate, Part No 3232. If your rifle is fitted with spacer washers between the magazine plate and barrel housing ensure they are refitted when the rifle is rebuilt. Open the bolt and remove the magazine from the barrel assembly. Remove the magazine end cap screw, Part No 3271 and the magazine end cap, Part No 3231 from the magazine. Part No 3230. Take care not to lose the magazine return spring, part No 3300 which is housed in the top, front magazine slot.

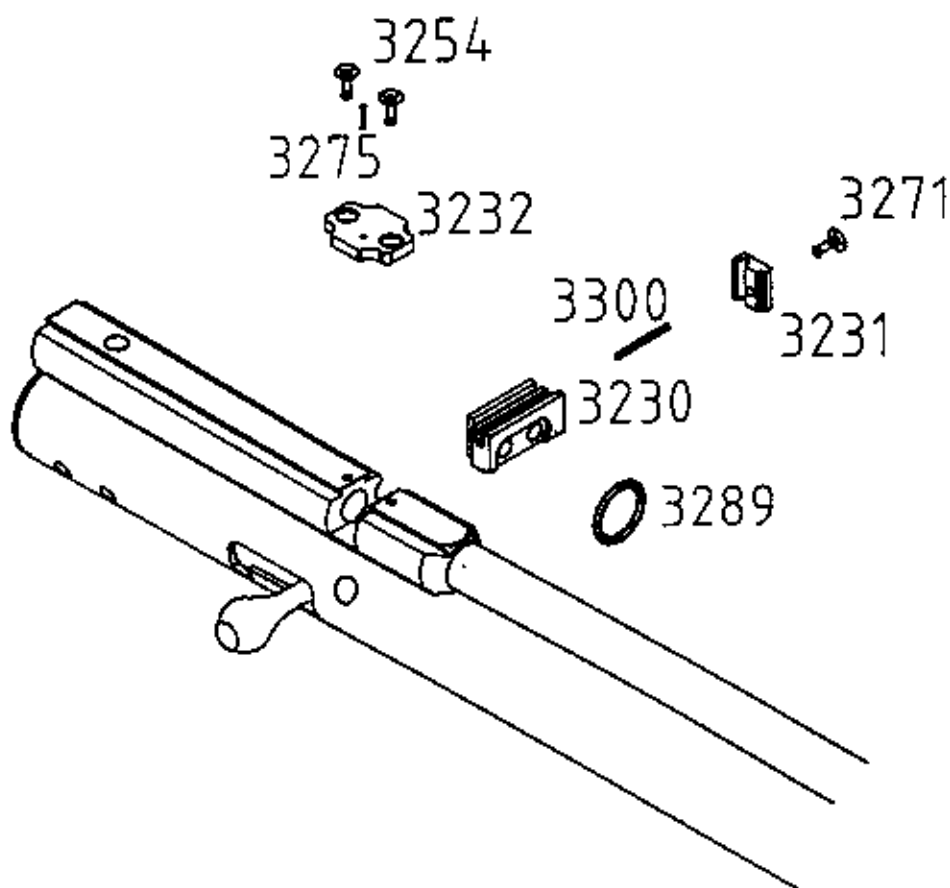
Remove the old 'O' ring from the magazine. Check the slots in the magazine are clear of debris. lightly lubricate the replacement 'O' ring, then fit the 'O' ring to the magazine. Do not overstretch the 'O' ring during the fitting operation.

Reassemble the magazine assembly in the reverse order of dismantling.

Before refitting the magazine to the rifle, close the bolt sufficiently enough to reveal the pellet prod 'O' ring, Part No 3288, in the barrel housing magazine slot. If the 'O' ring is worn it may be replaced at this stage without the need to strip the rifle any further. Carefully cut the old seal off the pellet prod, Part No 3251, lightly lubricate the replacement 'O' ring and push it over the pellet prod nose and into its slot.

Refit the magazine assembly to the barrel housing, engage the magazine spring stop pin, Part No 3275 fitted in the magazine plate, with the free end of the magazine return spring and refit the magazine plate screws.

Once the rifle has been rebuilt, check that both the bolt and magazine cycles freely.



USING THE WEBLEY PUMP TO REFILL THE WEBLEY RAIDER.

BEFORE USE, READ THE OPERATION INSTRUCTION LEAFLET WHICH IS ENCLOSED WITH THE PUMP.

The Webley Stimup Pump is supplied with a kit which allows it to be used with every pre-charged pneumatic air rifle currently available. When used with the Raider air rifle, the smaller 1/8" adapter and face seal supplied in the kit are not required.

Fit the filler nozzle, supplied with the Raider, directly to the pumps air hose assembly and tighten. Position the air hose/nozzle assembly so the rifle is lying flat on the ground when connected to the pump, then tighten the assembly onto the 1/4" BSP adapter.

Use the appropriate tools to tighten all parts to ensure airtight seals.

TO REFILL THE WEBLEY RAIDER ADOPT THE FOLLOWING PROCEDURE:

1. Close the pump air bleed screw, situated under the pressure gauge.
2. Open the rifle's bolt.
3. Ensure there is no dirt in rifle's filler hole, situated under the muzzle, then lay the rifle on the gun bag or an old sheet placed on the ground
4. Push the filler nozzle into the filler hole and begin to refill the rifle. The gauge reading will rise quickly for the first few cycles of the pump until the pressure in the air hose assembly is equal to that of the pressure in the rifle. As you continue to pump, the gauge reading will slowly rise as air is forced into the rifle's cylinder. Once the required pressure gauge reading is achieved, cease pumping.
5. Release the air trapped in the air hose assembly by undoing the air bleed screw - the air will escape through the vent hole in the side of the base block and the pressure gauge reading will drop back to zero.
6. Disconnect the filler nozzle from the rifle. The Raider is now ready for re-use.

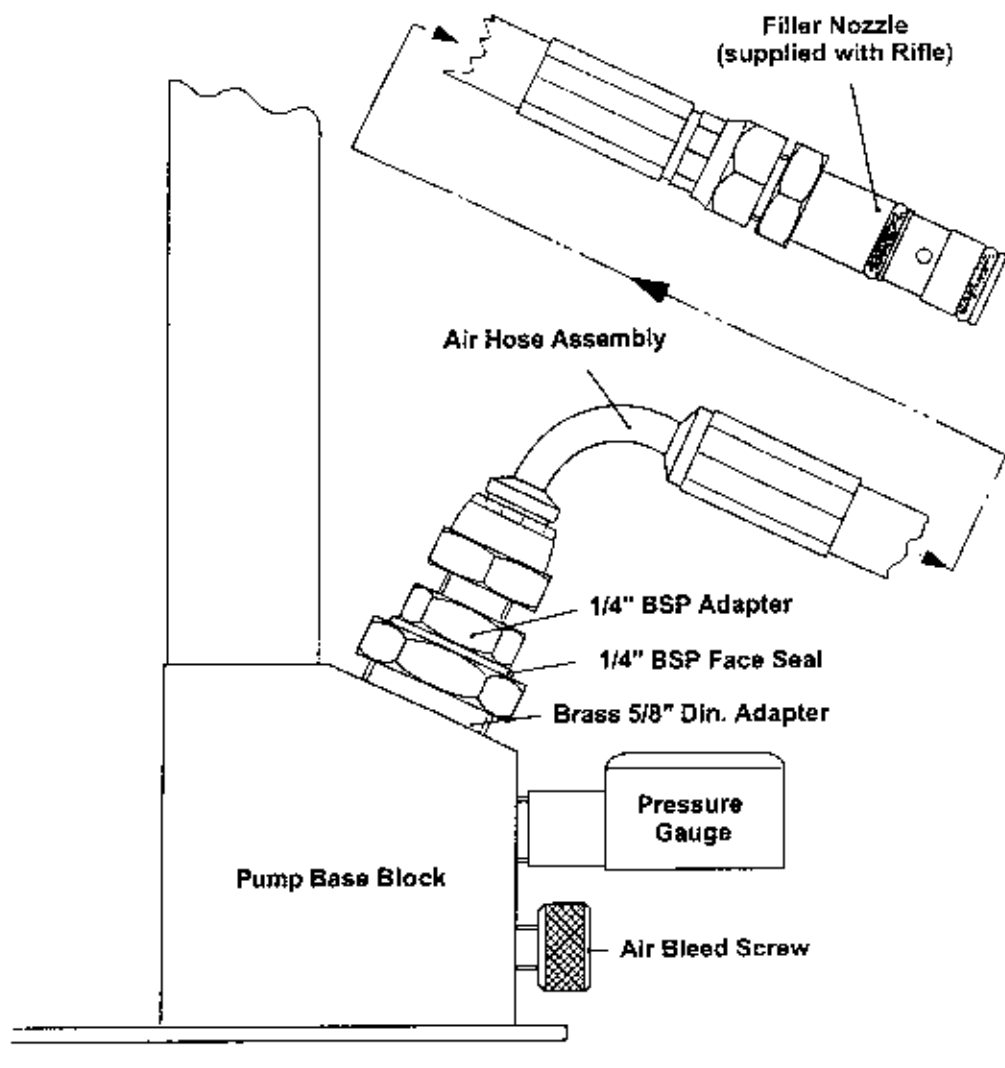
FAULT FINDING

SHOULD THE PUMP DEVELOP A FAULT WITHIN THE GUARANTEE PERIOD, CONSULT THE DEALER FROM WHOM IT WAS PURCHASED. THE GUARANTEE DOES NOT COVER PARTS DAMAGED OR INCORRECTLY ASSEMBLED BY THE OWNER.

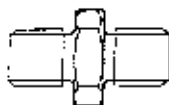
- a. If air is heard to be leaking from the system during the filling procedure and the pressure gauge reading is seen to drop, check the tightness of all joints and ensure the air bleed screw has been tightened.
- b. If the filler nozzle ejects from the rifle during the filling process, one or both of the nozzle O rings has been damaged. Replace both O rings.
- c. If the high pressure air has been completely emptied from the rifle and air is heard to be leaking from the barrel during the refilling procedure, the rifle's air valve is off its seating. Check the bolt is in the open position to ensure the bolt assembly is not resting against the valve, then pump rapidly to build up sufficient air pressure to completely close the air valve.

The diagram on the following page illustrates the pump set up for use with the Raider.

**THE WEBLEY PUMP SET UP FOR USE WITH
THE WEBLEY RAIDER.**



The following parts, supplied with the Universal Pump Kit, are not used with the Raider :-



1/8" BSP Adapter



1/8" BSP Face Seal

**This owner's manual was
provided as a service to you
by:**



www.airgunsofarizona.com

airguns_az@yahoo.com

Phone: (480)461-1113

Fax: (480)461-3928